

Early Childhood/Kindergarten

Program	Annual Tuition	10 Monthly Payments
2-Half Day (8:15AM-1:00PM ThF)	\$3484.00	\$348.40
3-Half Day (8:15AM-1:00PM MTW)	\$4160.00	\$416.00
5-Half Day (8:15AM-1:00PM M-F)	\$5200.00	\$520.00
5-Full Day (8:15AM-5:30PM M-F)	\$6760.00	\$676.00
<u>Extended and AfterCare Options for 2/3/5 Half Days:</u>		Add'l:
Extended Care until 3:15pm	\$1040.00 add'l	\$104.00
Extended Care & After Care until 5:30pm	\$2080.00 add'l	\$208.00

Grades

Program	Annual Tuition	10 Monthly Payments
1st-4th Grade (8:15AM - 3:15PM, Friday dismissal at 1:00PM)	\$6760.00	\$676.00
5th/6th Grade (8:15AM - 3:15PM, Friday dismissal at 1:00PM)	\$7800.00	\$780.00

All Families

Fees	Amount	Due	Refundable
Application Fee	\$50.00	With initial application	No
Tuition Deposit	10% of total tuition	With signed enrollment contract (<i>new enrollment only</i>)	No
Affiliation/Equipment Fee:			
Early Childhood - 4th	\$400	Due June 1, 2010	see NOTE
5th/6th	\$500	Due June 1, 2010	see NOTE

NOTE: The first half of the Affiliation/Equipment fee is NOT refundable. The second half of the Affiliation/Equipment fee is only refundable during the first 6 weeks of attendance. If the student withdraws within the first 6 weeks, the refund for that half will be prorated. This fee is assessed annually.

Affiliation/Equipment Fee refers to:

1) AWSNA (Association of Waldorf Schools of North America) membership dues and consultation and evaluation of our program and teachers by AWSNA evaluators necessary to maintain accreditation.

2) The equipment fee serves many purposes. In addition to purchasing consumable supplies for the students, this fee is also assessed in order to outfit classrooms (e.g., student and teacher desks, improving classrooms to meet code regulations, renovation of new classrooms, specialized lesson equipment, etc).

Tuition Deposit

- A deposit equivalent to 10% of the annual tuition is required with a signed enrollment contract. Any tuition deposit will be applied to your tuition balance at the time of withdrawal from the school. Upon receipt of the contract and tuition deposit a place will be held for your child in the class.

- No deposit is required of continuing families who have already made tuition deposits, except when the 10% minimum is not met, due to changes in enrollment.

Tuition and Fee Payment

Prairie Moon offers one and two payment plans as well as a 10-month payment plan through FACTS Tuition Management Payment program (www.factsmtg.com). Payment through FACTS will begin with the July payment. Prairie Moon Waldorf School pays the FACTS Tuition Management Fee & FACTS Grant & Aid Assessment Fees. However, if the tuition payer opts for the "Peace of Mind" benefit they will be required to pay the \$12 fee separately.

10-month payment plans will be debited through FACTS Tuition Management beginning in July and ending in April. All supplemental fees must be paid in full by the first day of school.

Tuition for students who enroll after the first 2 weeks of school will be prorated on the basis of number of school days remaining, which may result in payments that are slightly different than those listed above for the 10-month payment plan. Likewise, for families who disenroll during the school year, the amount of funds remaining to be paid by the school or the family will be prorated based on the number of school days past plus the 30 days written notice.

Full Tuition Payment Schedule:

Full payment of tuition amount is due by July 5, 2010.

2 Payment Schedule Plan:

First half of tuition payment is due by July 5, 2010.

Remaining half of tuition payment is due by December 5, 2010.

10 Payment Schedule:

1st payment: July 5, 2010

2nd payment: August 5, 2010

3rd payment: September 5, 2010

4th payment: October 5, 2010

5th payment: November 5, 2010

6th payment: December 5, 2010

7th payment: January 5, 2011

8th payment: February 5, 2011

9th payment: March 5, 2011

10th payment: April 5, 2011

A Word About Tuition Assistance

Tuition assistance is awarded to a family based on relative financial need among the financial aid applicants and the available financial aid budget. Prairie Moon Waldorf School is determined to make a Waldorf education accessible to families from a wide range of economic backgrounds.

Prairie Moon Waldorf School uses a third party, FACTS, to collect information from families about their financial situation. The school's Finance Committee oversees the decision-making aspect and will send any award letter to the family seeking tuition assistance.

Applicants are required to re-qualify annually, even if you already receive a reduction in your tuition in the current school year and/or past years. Financial aid is funded out of the school's operating funds. Any applicant for tuition assistance will need to submit to FACTS, in addition to the tax returns for the previous calendar year, documentation of their last three months of income (pay stub, etc.) if tuition assistance is being sought after September 1st in the academic year. It is expected both parents to participate in the FACTS process, even if parents maintain separate households.

Tuition assistance in our Early Childhood program is available on a **limited basis** with up to 30% for children who are not considered kindergartners by Prairie Moon Waldorf School and up to 50% of the regular tuition being able to be waived for children who are considered to be kindergartners by Prairie Moon Waldorf School.

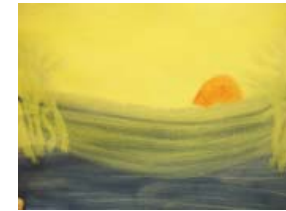
Any family who requests tuition assistance for a student in the lower grades classes (those classes not including the 5th grade fee structure) may be eligible for a maximum of 55% reduction off of the regular full tuition. Any family who requests tuition assistance for a student in the higher grades classes (those classes including the 5th grade fee structure) may be eligible for a maximum of 60% reduction off of the regular full tuition.

These reductions are based on verified family data submitted to FACTS Grant and Aid Assessment as well as any additional financial data requested by the Finance Committee. Final approval must be given by the Finance Committee and/or Board of Directors.



PRAIRIE MOON

WALDORF SCHOOL



Tuition and Fee Schedule 2010-2011

1853 E. 1600 Road
Lawrence, KS 66044

785.841.8800
www.prairiemoon.org